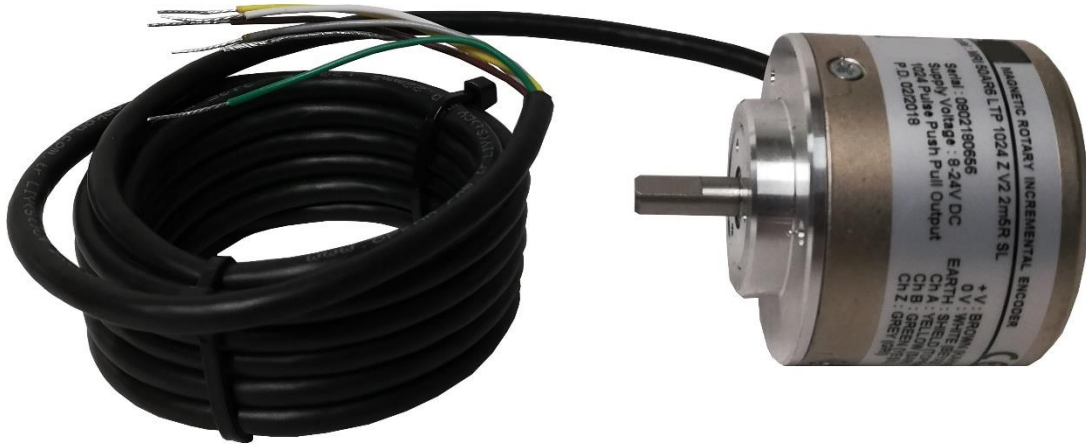


MAGNETIC INCREMENTAL ENCODER



TECHNICAL FEATURES:

[LAP PULSES: 1024]

- Model: MRI
- IP Degree: IP 54
- Output Channel: Z
- Cable Output: R = Radial
- Shaft Diameter: $\varnothing 6$ mm
- Case Diameter: $\varnothing 50$ mm
- Material: aluminium/steel
- Maximum Speed: 3500 rpm
- Output Type: LTP = Push-Pull
- Supply Voltage: V2 = 8-24V DC
- Connector/cable length: 2M5 = 2,5m

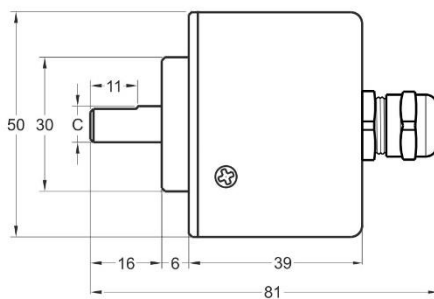
TRIVENETA IMPIANTI S.r.l.

Administrative Headquarters: Via Scopella, 22 - 37060 Castel d'Azzano VR - Italy

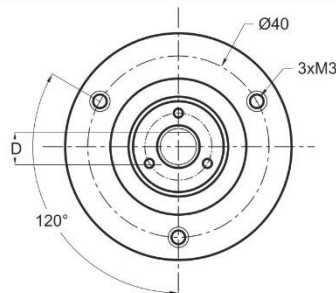
Operational Headquarters: Via Bovolino, 18/B - 37060 Buttapietra VR - Italy

Phone: +39 045 518 747 - Fax +39 045 854 56 05 - Web Site: www.trivenetaimpianti.com - E-mail: sales@trivenetaimpianti.com

WIRING DIAGRAM

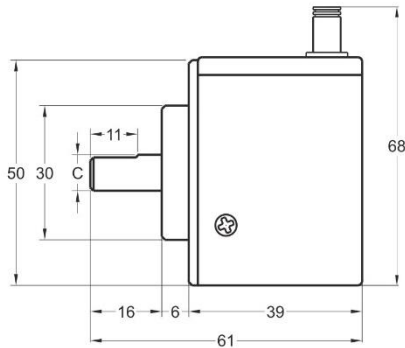


Shaft Type / Axial

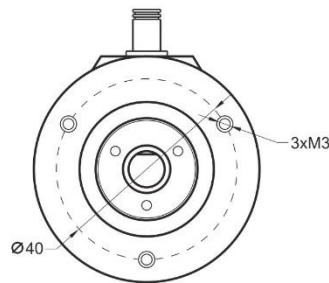


Push-Pull / TTL Linedriver Cable Output

+V : Brown
 0V : White
 GND : Shield
 Ch A : Yellow
 Ch B : Green
 Ch Z : Gray
 Ch A inv. : Blue
 Ch B inv. : Red
 Ch Z inv. : Pink



Shaft Type / Radial



HTL Linedriver Cable Output

+V : Brown
 0V : White
 GND : Shield
 Ch A : Yellow
 Ch B : Green
 Ch Z : Gray
 Ch A inv. : Blue
 Ch B inv. : Red
 Ch Z inv. : Pink

MRI 50	R (shaft)	
	C	D
	Ø6mm	5,50mm
Ø8mm	7,30mm	
Ø10mm	9,00mm	