

ENCODER INCREMENTALE ROTATIVO OTTICO



CARATTERISTICHE TECNICHE:

[IMPULSI GIRO: 50]

- Modello: MRID
- Grado IP: IP 54
- Canale output: Z
- Output cavo: R = Radial
- Materiale: alluminio/acciaio
- Tipo output: LTP = Push-Pull
- Velocità massima: 3500 rpm
- Diametro dell'albero: $\varnothing 8$ mm
- Diametro della cassa: $\varnothing 50$ mm
- Lunghezza connettore/cavo: 2M5 = 2,5m
- Tensione di alimentazione: V2 = 8-24V DC

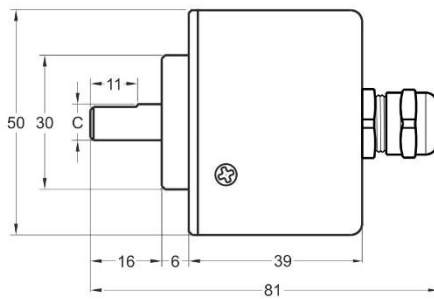
TRIVENETA IMPIANTI S.r.l.

Sede Amministrativa: Via Scopella, 22 - 37060 Castel d'Azzano VR - Italia

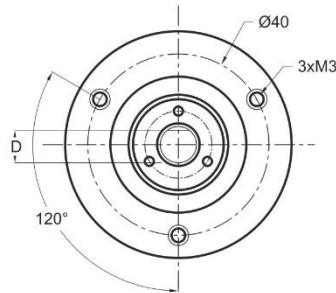
Sede Operativa: Via Bovolino, 18/B - 37060 Buttapietra VR - Italia

Telefono: +39 045 518 747 - Fax +39 045 854 56 05 - Sito Web: www.trivenetaimpianti.com - E-mail: sales@trivenetaimpianti.com

SCHEMA ELETTRICO

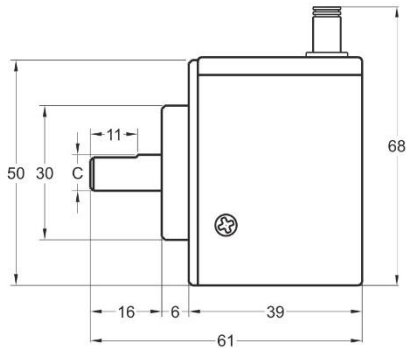


Shaft Type / Axial

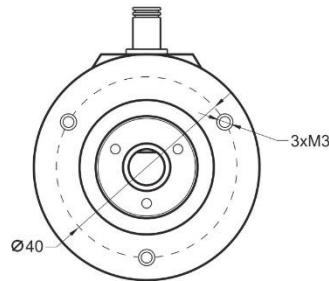


Push-Pull / TTL Linedriver Cable Output

+V : Brown
 0V : White
 GND : Shield
 Ch A : Yellow
 Ch B : Green
 Ch Z : Gray
 Ch A inv. : Blue
 Ch B inv. : Red
 Ch Z inv. : Pink



Shaft Type / Radial



HTL Linedriver Cable Output

+V : Brown
 0V : White
 GND : Shield
 Ch A : Yellow
 Ch B : Green
 Ch Z : Gray
 Ch A inv. : Blue
 Ch B inv. : Red
 Ch Z inv. : Pink

MRI 50	R (shaft)	
	C	D
	Ø6mm	5,50mm
Ø8mm	7,30mm	
Ø10mm	9,00mm	