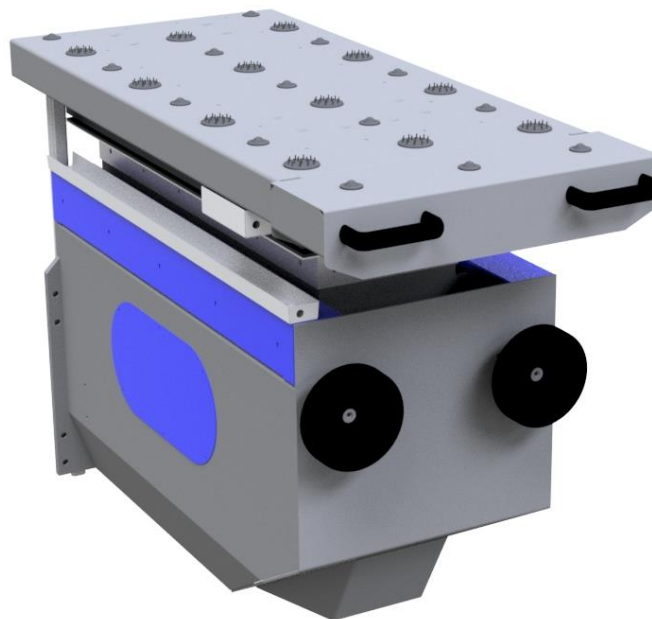


If you **bend large sheet metal** and your **operators find it difficult** the solution to facilitate them while **ensuring safety and speed of execution** is our banding aid Up.

UP 300 ON è applicabile su UP RAIL con **movimentazione manuale** verticale ed orizzontale tramite volantini con predisposizione per il kit ventose ns. COD. 025 V - UP VACUUM ed abbinabile a quadro elettrico UP CABINET SINGLE (COD. 025 CS) o DOUBLE (COD. 025 CD)

Portata massima: 150kg



Our Up:

- It is installed on the front of your current press brake
- It will **increase the productivity** of the machine
- Your operators will be able to **work more fluidly**
- It **reduces the risk of injury** to the worker (eg tilting the sheet)

Up helps the operator to improve his job,
protecting his life and your business
while increasing productivity.

TRIVENETA IMPIANTI S.r.l.

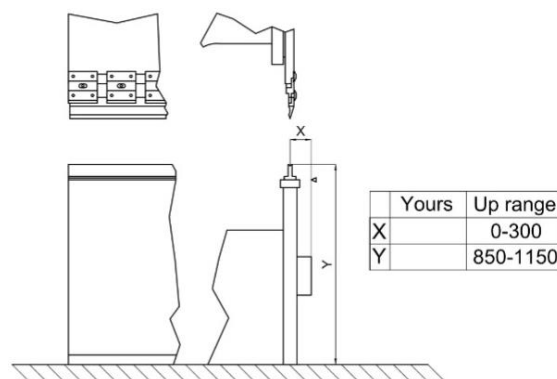
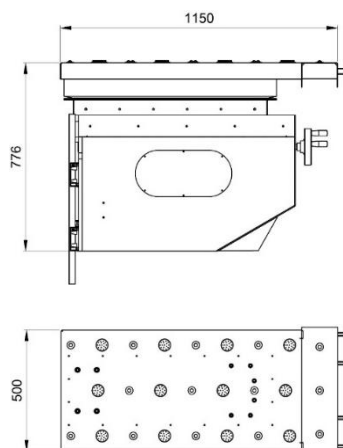
Administrative Headquarters: Via Scopella, 22 - 37060 Castel d'Azzano (VR) - Italy

Operational Headquarters: Via Bovolino, 18/B - 37060 Buttapietra (VR) - Italy

Phone: +39 045 518 747 - Fax +39 045 854 56 05 - Web Site: www.trivenetaimpianti.com - Email: sales@trivenetaimpianti.com

Up is a banding aid that we define “sheet follower” and helps the operator to improve his work by **protecting his safety and facilitating him** so as to help in turn your company to **increase the quality and speed** of production.

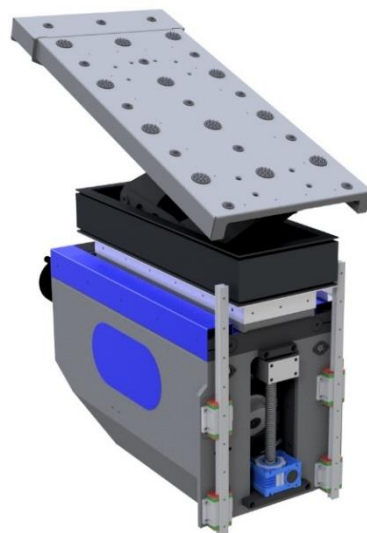
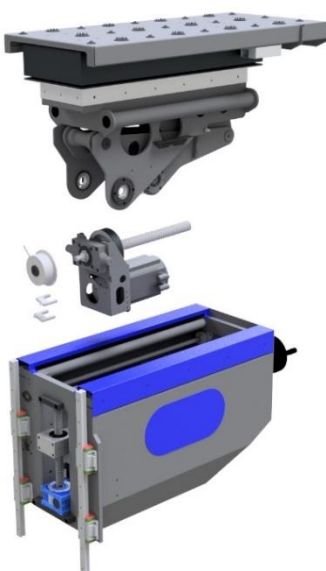
DIMENSIONS: Width 760mm - Length 1100mm
HEIGHT: adjustable from 950mm to 1150mm
ROTATION CENTRE: 300mm
SUPPORT TOP DIMENSIONS: 500 x 1000, extendable up to 1500mm
WEIGHT: 250 kg
AVAILABLE TORQUE: 150 kgm
ANGLE OF INCLINATION OF THE PLANE: 0° / 75°
ACCURACY: +/- 0.5°
FORWARD/BACKWARD ADJUSTMENT: manual run of 120mm
HEIGHT ADJUSTMENT: manual run 200mm
SAFETY BRAKE SEPARATED FROM THE ENGINE



Movement via levers and recirculating screws

External brake applied on the ball screw

500x1800 extendable table with balls and brushes



TRIVENETA IMPIANTI S.r.l.

Administrative Headquarters: Via Scopella, 22 - 37060 Castel d'Azzano (VR) - Italy

Operational Headquarters: Via Bovolino, 18/B - 37060 Buttapietra (VR) - Italy

Phone: +39 045 518 747 - Fax +39 045 854 56 05 - Web Site: www.trivenetaimpianti.com - Email: sales@trivenetaimpianti.com