



TRIVENETA SISTEMI

# Kit RGeneration RG

COD. 010 PRFRM

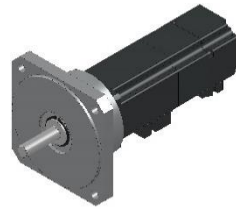
Kit RGeneration RG is a **complete kit** designed specifically to let your press brake express its maximum work potential, **considerably optimizing performance.**

Kit RGeneration RG is suitable for: RG25/12 - RG35/20 - RG35/25 - RG75/30 - RG100 - RG104

## WHAT KIT RGeneration RG CONSISTS OF:



MOTOR AXIS R



MOTOR AXIS X



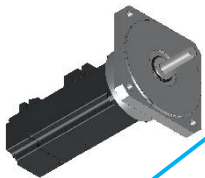
MOTOR AXIS R1



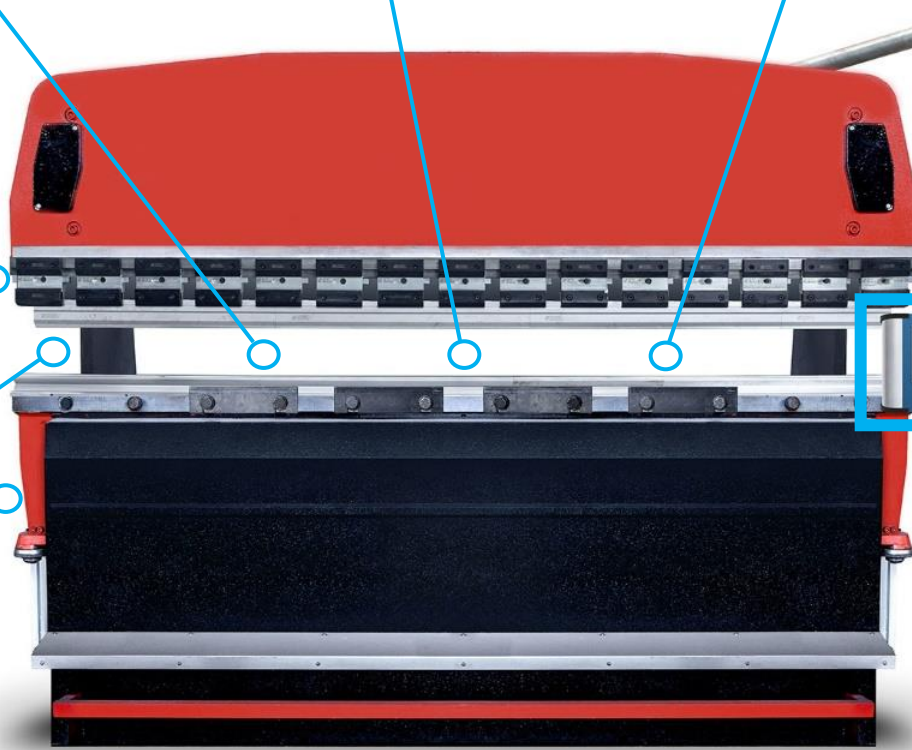
POTENTIOMETER



ELECTRICAL PANEL



MOTOR AXIS Y



POSITRONIC



### TRIVENETA IMPIANTI S.r.l.

Administrative Headquarters: Via Scopella, 22 - 37060 Castel d'Azzano VR - Italy

Operational Headquarters: Via Bovolino, 18/B - 37060 Buttapietra VR - Italy

Phone: +39 045 518 747 - Fax +39 045 854 56 05 - Web Site: [www.trivenetaimpianti.com](http://www.trivenetaimpianti.com) - E-mail: [sales@trivenetaimpianti.com](mailto:sales@trivenetaimpianti.com)



## POSITRONIC 7" WITH SUPPORT ARM

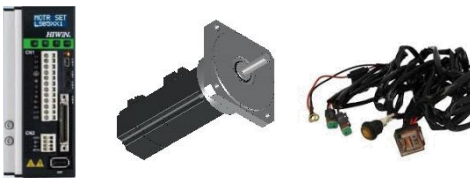
4 axes 7" positioner power supply 24 W with:

- 4 encoder inputs
- 2 analog outputs for axes X and Y
- 2 outputs for Stepper motors for axes R and R1



## LINEAR POTENTIOMETER - ELPC

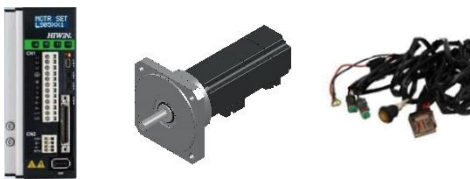
- Measurement stroke: 50 to 800 mm and Repeatability: <0,01mm
- Linearity:
  - ±%0.05 (>200mm); ±%0,1 (130-200mm); ±%0,2 (74-130mm); ±%0,5 (<75mm)



## BRUSHLESS DRIVE + MOTOR AXIS Y + NEW WIRING

### Brushless Drive Features:

- Final stage supply voltage and frequency: 200 to 240 VAC
- Number of phases: 1 or 3
- Power consumption of final stage: 1.5 A<sub>eff</sub> - 4.1 A<sub>eff</sub> - 7.5 A<sub>eff</sub>



## BRUSHLESS DRIVE + MOTOR AXIS X + NEW WIRING

### Brushless Drive Features:

- Final stage supply voltage and frequency: 200 to 240 VAC
- Number of phases: 1 or 3
- Power consumption of final stage: 1.5 A<sub>eff</sub> - 4.1 A<sub>eff</sub> - 7.5 A<sub>eff</sub>



## STEPPER DRIVE + MOTOR AXIS R + NEW WIRING

### Stepper Drive Features:

- Nominal voltage: 220 VAC
- Nominal power: 400 W
- Nominal torque: 1.27 Nm



## STEPPER DRIVE + MOTOR AXIS R1 + NEW WIRING

### Stepper Drive Features:

- Nominal voltage: 220 VAC
- Nominal power: 400 W
- Nominal torque: 1.27 Nm



## ELECTRICAL COMAND PANEL

Inside the electrical panel, the existing part will be replaced by a new control panel for engine management.